



# **CTF**

*logistics services*

**“NO  
LIMITS”**

[www.ctflogistics.ae](http://www.ctflogistics.ae)





## **WHO** **WE ARE**

CTF provides oversize load shipping solutions.

We are specialized in transportation of heavy cargo and we use different mode such as Break-bulk, RORO, special equipments etc. ...

We offer reliable and quality equipment transport across the globe.

With a presence and network all over the world, we are using our specialized team & partners to offer tailor made solutions.





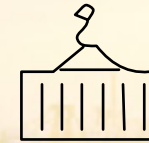
## Sea Freight

We ensure safe sea transportation and delivery of complex cargos around the world. We work within the 5 continents to meet the needs of our clients both in terms of cost and timeframe requirements, and we have a reliable network of agents on hand.



## Roro & Breakbulk

CTF has over 10 years of experience in the high and heavy cargo industry, making us one of the leaders in the region. We manage the challenges of planning and coordinate RORO & Break bulk transport by sea.



## Project Cargo

Project cargo can consist of one or multiple shipments, and it can cover a wide range of freight volume. re-planning is crucial for our team. As different countries have different regulations when it comes to large-scale transportation, the operation must be detail-oriented from the offset.



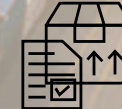
## Air Freight

CTF has agreements with all major air carriers worldwide. We can offer our customers door to door delivery for any shipment, any weight, and any size.



## Land Freight

We are a major player in the land freight industry as we own a wide range of trucks and trailers in the GCC. Our land freight services allow our customers more flexibility in terms of cost and method of transportation.



## Customs Clearance

CTF is amongst few, a certified member of the UAE authorized economic operator programme which allows for smooth and efficient process when it comes to customs documentation.





# Mega Reactors

CTF made history in the UAE: Breakbulk shipment directly hauled by a floating crane carrying 4 mega reactors, weighting 829 TONS TOTAL, each sizing 35m long.

Jebel Ali port had to close the port to ensure the safety of this operation. The units were delivered door to door to Europe.





# Pipes



**Over 320 GRP pipes shipped from Jakarta to USA in break bulk cargo, for a total of 24 000 cbm.  
The project included a full scope from loading & lashing into the vessel.**



# Cars Loading - *Lashing* - Shipping



More than 20 cars are shipped on a weekly basis from Jebel Ali port to Europe and Africa sectors.

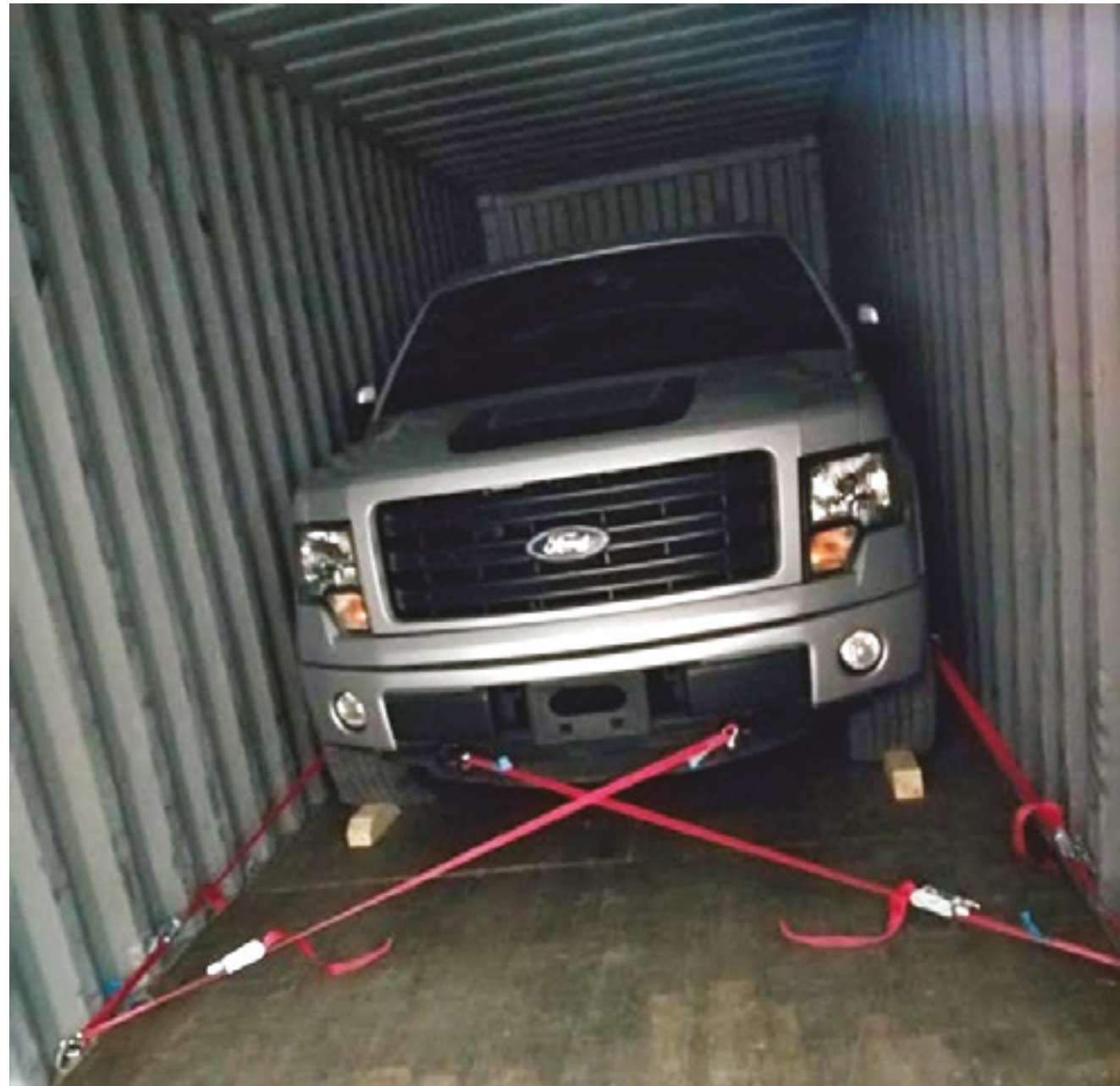
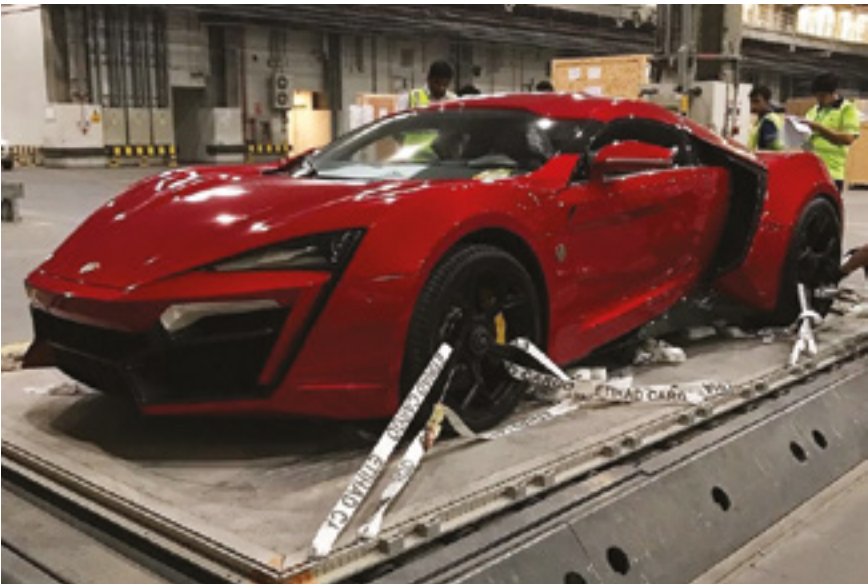
We ship vehicles overseas by airfreight, sea containers and by RoRo car transport ships.

Depending on the type of vehicle, our specialized team is expert in loading and lashing of the units inside the containers, to give you the most effective and economical solution.





# Cars Loading - *Lashing* - Shipping





# Boat Shipping





# *Dismantling & Shipping*





# *Special Equipment*



**CTF offers more than just shipping, we tailor transportation according to our customer's needs. We can dismantle machines to make it fit in a container & save cost on the transport. Our team is loading and lashing machinery on a weekly basis on special containers.**



# Featured Projects



**DUBAI METRO EXPOLINK 2020**



**EXPO 2020 CANADIAN PAVILLION**



**DUBAI SOLAR PARK**



**DOHA METRO**



**RIYADH METRO PROJECT**



**HARAM PROJECT SAUDI ARABIA**



CTF logistics services  
Khalifa Port  
Abu Dhabi, UAE  
Tel: + 972 564 6307  
Email: [info@ctflogistics.ae](mailto:info@ctflogistics.ae)  
[www.ctflogistics.ae](http://www.ctflogistics.ae)



**CTF**  
logistics services

“NO  
LIMITS”

